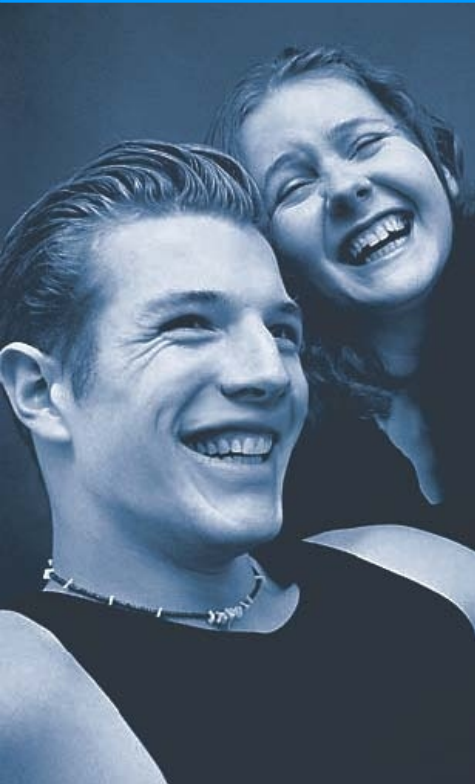




4N INFINET

Infinet™ is an Intelligent Network (IN) based Centralized Convergent Billing Solution offering a complete Billing and Roaming Platform. INfinet™ has all the latest IN features, Real time billing, Service level Rating definition, real-time SMS rating, real time credit control, Global Roaming, Supports SIGTRAN (M3UA) and a full fledged distribution ERP and can take care of all Billing and Roaming related requirements of any CDMA / GSM service provider.



Convergence Billing

INfinet™ provides Convergence Billing with capabilities to rate and Bill services like Voice, SMS, Data, Fax, Video Calls, MMS, VMS, Streaming, Push to Talk, Fixed line Terminals. Rating and Billing can be done, both in Currency terms and in Unit terms.

Real time Rating for all Services

INfinet™ provides real time rating and billing using configurable Unit of Charging and Granularity for all the available services.

Real time Credit Control Solution

INfinet™ provides, Subscriber level and Service level credit control configuration. Using this feature, Credit Control is possible for both Prepaid and Postpaid subscribers of the service. INfinet™ provides threshold definition for notices through SMS and subsequent service disablement.

Rating Criteria Definition

INfinet™ allows rating of various services based on Distance, Network Access Types i.e. WLL, Fixed, Cellular, Same Carrier etc., Calling Party Category, Long Distance Carrier, Quality of Service, Charge Type i.e. Toll free, Airtime, Pulse (single and differential), Periodic charge, Per Feature Usage Charge, Special Numbers, 3-party Calls, Roaming, Call Forwarding, Call Waiting, Friends & Family, Closed User Group, Calendar based differential charging, Location based differential charging and Preferred Destination charging.

Charging Definition

INfinet™ allows Charging based on Multiple Balance Definition like Core Balance and Promotional Balance, Time based Charging, Multi-step Charging, Telescoping Charging, Tiered Charging, and Bundling charge.

Account Management

XIUS INfinet™ allows Account Profile Management based on Account categories namely, Individual Account, Family Account, Corporate Account, Class of Service Definition i.e. Minimum Balance Limit, Negative Balance Limit, Linked Parent / Child accounts, Multiple Balance Facility (Core and Promotional balance), Multiple MIN definition for single account, Account Recharge through Voucher, Credit Card, Bank ATM, Customer Case. INfinet™ provides following Recharge interfaces namely, IVRS, Web, Customer Care, ATM, SMS, PDSN. Account Status Definition can be Pre Activated Stage, Active Stage, Grace Period Stage, Quarantine State, Blocked State, and Expired State. System provides Multiple Grace Period stages that can be defined based on class of service.

Tariff Plan Definition

INfinet™ enables Tariff Plan definition at Global level, Location Level, and Service Level.

Promotions

INfinet™ facilitates promotions charging based on Percentage Rating, Absolute Rating, Percentage and Absolute discounting, Bonus definition in Units terms or in Currency terms.

Service Platform Components

INfinet™ provides following Service Platform Components namely, Service Control (SCP), Service Definition (SDP), Service Management (SMP), Service Creation Environment (SCEP) and Service Resource Platform (SRP) for Interconnection with other Resources of the Network like IVR.

Voucher Management

INfinet™ has the facility to create Voucher profiles, linking Voucher based on products and/or on value, Across Country Voucher usage, Encrypted PIN Generation, Automatic Grace Period Definition, Voucher Status definition and tracking, definition of re-order level, blocking of Vouchers.

Platform

The Solution is developed on leading technologies - Oracle Database, Application Server and HP Opencall SS7 stack. Packaged with a powerful online analytical Business Intelligence tool for adhoc and standard reporting.

Scalability

Hardware sizing can be made in progression, avoiding huge upfront and “idle” investments.

Management Functionality

INfinet™ provides various management functionalities namely, Fault Management i.e. Alarm Generation and Integrating with existing Network management solutions using SNMP alarms, Configuration management i.e. security management.

External RADIUS Server interface

INfinet™ provide interface to external RADIUS Server for Authentication, Authorization and Accounting Interim Authorization and Accounting updates.